

SW

## BIOLOGY ANALYSIS NOTES

Case: M2022-4843

Examiner: Stephanie Wilt

Dates of analysis: 12/02/2022 to 12/07/2022

### General Analysis

#### Item 1-KA-BAR knife sheath

<u>Task/Test</u>	<u>Value</u>
Date of Analysis	12/05/2022
Seal	evidence tape
Initialed	yes
Packaging	brown paper bag
Package Labeling	22-M09903... Item 11 Knife sheath
Contents Description/Notes	KA-BAR USMC leather knife sheath and ets sm man env labeled "Trace" (not examined). Note: Sheath previously examined prior to latent print analysis (see Report #1, 11/18/22). Obs black and off-white residue overall on outside. Used 2 swabs to swab inside surface, ~5" deep, of blade portion (=Item 1.5, light brown transfer to swab). Repack, ets.
Retained	Yes

#### Item 1.5-Swabs of inside surface of blade portion

<u>Task/Test</u>	<u>Value</u>
Date of Analysis	12/05/2022
Contents Description/Notes	~1/2 of each swab cut to DNA. Remaining swabs pack in man env, ets.
Retained	Yes
Item Source	Q

#### Item 37-Submitted swabs from 1127 King Rd. Apt. 1

<u>Task/Test</u>	<u>Value</u>
Date of Analysis	12/02/2022
Seal	evidence tape
Initialed	yes
Packaging	manila envelope
Package Labeling	22-M09903...Two swabs from entry hallway wall + kitchen wall...1127 King Rd, Apartment 1
Contents Description/Notes	Two ets coin man env: one labeled Marker 1...Red/brown stain, south entry hallway wall (=Item 37.1), and one labeled Marker 2...Red/brown stain, west kitchen wall (=Item 37.2). Repack, ets.
Retained	Yes

#### Item 37.1-Submitted swab from south entry hallway wall

<u>Task/Test</u>	<u>Value</u>
Date of Analysis	12/02/2022
Contents Description/Notes	One plastic capped, red-brown swab. ~1/3 of swab cut to DNA. Repack, ets.
Retained	Yes
Item Source	Q

#### Item 37.2-Submitted swab from west kitchen wall

<u>Task/Test</u>	<u>Value</u>
Date of Analysis	12/02/2022

SW

## BIOLOGY ANALYSIS NOTES

Case: M2022-4843 Examiner: Stephanie Wilt Dates of analysis: 12/02/2022 to 12/07/2022

Contents Description/Notes	One plastic capped, red-brown swab. ~1/3 of swab cut to DNA. Repack, etc.
Retained	Yes
Item Source	Q

### Item 38-Submitted swabs, agency Item 264, from scene

<u>Task/Test</u>	<u>Value</u>
Date of Analysis	12/02/2022
Package Labeling	22-M09903....Item 264 Blood Swab...From scene
Contents Description/Notes	Two swab boxes each cont'g 1 light red-brown swab. Tested both swabs (both = o-tol pos). ~1/2 of each swab cut to DNA. Repack, etc.
O-Tol	Positive
Retained	Yes
Item Source	Q

### Item 39-Submitted swab, agency Item 261, from scene

<u>Task/Test</u>	<u>Value</u>
Date of Analysis	12/02/2022
Seal	evidence tape
Initialed	yes
Packaging	manila envelope
Package Labeling	22-M09903....Item 261 Blood swab...From scene
Contents Description/Notes	Two swab boxes each cont'g 1 red-brown swab (note: staining concentrated at tip). Tested both swabs (both = o-tol pos). ~1/2 of each swab cut to DNA. Repack, etc.
O-Tol	Positive
Retained	Yes
Item Source	Q

### Item 40-Black Polar Penguin glove

<u>Task/Test</u>	<u>Value</u>
Date of Analysis	12/02/2022
Seal	evidence tape
Initialed	yes
Packaging	brown paper bag
Package Labeling	22-M09903....Item 266 Glove

SW

## BIOLOGY ANALYSIS NOTES

Case: M2022-4843

Examiner: Stephanie Wilt

Dates of analysis: 12/02/2022 to 12/07/2022

### Contents Description/Notes

Black Polar Penguin right-hand glove, additionally labeled: 3396BK, M, Majestic. Brand and logo on top side; black knit fabric on top side and on inside; textured rubber on palm side and over finger tips; and light green trim on wrist cuff. Obs brown, red, light brown, and red-brown stains overall, poss plant debris, poss hairs/fibers (all left in place), and apparent dirt  
Tested 17 total stains: 8 on top side: 6 on fingers and 1 on cuff (all = o-tol pos; note: cuff stain appears consumptive) and 1 in logo (= o-tol neg); and 9 on palm side: 8 on rubber material and 1 on cuff (all = o-tol pos).  
Used 1 swab to swab o-tol pos stain on palm side under pointer finger (=Item 40.1, light brown transfer to swab, majority of stain remaining on glove; note: stain starts between pointer and middle finger and ends by thumb).  
Used 1 swab to swab o-tol pos stain on palm side under pinky finger (=Item 40.2, brown transfer to swab, ~2/3 of stain remaining on glove).  
Used 1 swab to swab o-tol pos stain on ring finger (=Item 40.3, dark brown transfer to swab, ~1/2 of stain remaining on glove).  
Used 2 swabs to swab entire inside surface (=Item 40.4, brown transfer to swab).  
Repack, ets. Note: Item not marked.

O-Tol

Positive

Retained

Yes

### Item 40.1-Swab of stain on palm under pointer finger

#### Task/Test

#### Value

Date of Analysis

12/02/2022

Contents Description/Notes

Whole swab cut to DNA, swab stick not retained.

Retained

Yes

Item Source

Q

### Item 40.2-Swab of stain on palm under pinky finger

#### Task/Test

#### Value

Date of Analysis

12/02/2022

Contents Description/Notes

Whole swab cut to DNA, swab stick not retained.

Retained

Yes

Item Source

Q

### Item 40.3-Swab of stain on ring finger

#### Task/Test

#### Value

Date of Analysis

12/02/2022

Contents Description/Notes

Whole swab cut to DNA, swab stick not retained.

Retained

Yes

Item Source

Q

### Item 40.4-Swabs of inside black Polar Penguin glove

#### Task/Test

#### Value

Date of Analysis

12/02/2022

Contents Description/Notes

~1/2 of each swab cut to DNA. Remaining swabs pack in man env, ets.

SW

## BIOLOGY ANALYSIS NOTES

Case: M2022-4843

Examiner: Stephanie Wilt

Dates of analysis: 12/02/2022 to 12/07/2022

Retained Yes  
Item Source Q

### Item 41-Reference oral swab [REDACTED]

<u>Task/Test</u>	<u>Value</u>
Date of Analysis	12/06/2022
Seal	evidence tape
Initialed	yes
Packaging	manila envelope
Package Labeling	22-M09903...Buccal swab.. [REDACTED]
Contents Description/Notes	Swab packet cont'g one plastic capped, off-white swab. ~1/4 of swab cut to DNA. Repack, ets.
Retained	Yes
Item Source	E

### Item 42-Reference oral swab [REDACTED]

<u>Task/Test</u>	<u>Value</u>
Date of Analysis	12/06/2022
Seal	evidence tape
Initialed	yes
Packaging	manila envelope
Package Labeling	22-M09903...Buccal.. [REDACTED]
Contents Description/Notes	Swab packet cont'g one plastic capped, off-white swab. ~1/4 of swab cut to DNA. Repack, ets.
Retained	Yes
Item Source	E

### Item 43-Reference oral swab [REDACTED]

<u>Task/Test</u>	<u>Value</u>
Date of Analysis	12/06/2022
Seal	evidence tape
Initialed	yes
Packaging	manila envelope
Package Labeling	22-M09903...Buccal.. [REDACTED]
Contents Description/Notes	Swab packet cont'g one plastic capped, off-white swab. ~1/4 of swab cut to DNA. Repack, ets.
Retained	Yes
Item Source	E

### Item 44-Reference DNA swab [REDACTED]

<u>Task/Test</u>	<u>Value</u>
Date of Analysis	12/06/2022
Seal	evidence tape
Initialed	yes
Packaging	manila envelope
Package Labeling	22-M09903....DNA swab.. [REDACTED]
Contents Description/Notes	One plastic capped, off-white swab. ~1/4 of swab cut to DNA. Repack, ets.
Retained	Yes
Item Source	E

SW

## BIOLOGY ANALYSIS NOTES

Case: M2022-4843

Examiner: Stephanie Wilt

Dates of analysis: 12/02/2022 to 12/07/2022

### Item 45-Reference oral swab [REDACTED]

<u>Task/Test</u>	<u>Value</u>
Date of Analysis	12/06/2022
Seal	evidence tape
Initialed	yes
Packaging	manila envelope
Package Labeling	22-M09903...Buccal swab [REDACTED]
Contents Description/Notes	Mailing envelope tape sealed cont'g swab packet cont'g one plastic capped, off-white swab. ~1/4 of swab cut to DNA. Repack, ets.
Retained	Yes
Item Source	E

### Item 46-Reference DNA swabs [REDACTED]

<u>Task/Test</u>	<u>Value</u>
Date of Analysis	12/06/2022
Seal	evidence tape
Initialed	Yes
Packaging	manila envelope
Package Labeling	22-M09903...DNA Swab.. [REDACTED]
Contents Description/Notes	Two plastic capped, off-white swabs. ~1/4 of one swab cut to DNA. Repack, ets.
Retained	Yes
Item Source	E

### Item 47-Reference oral swabs [REDACTED]

<u>Task/Test</u>	<u>Value</u>
Date of Analysis	12/06/2022
Seal	evidence tape
Initialed	yes
Packaging	manila envelope
Package Labeling	22-M09903...Buccal swab.. [REDACTED]
Contents Description/Notes	Two plastic capped, off-white swabs. ~1/4 of one swab cut to DNA. Repack, ets.
Retained	Yes
Item Source	E

### Item 48-Reference DNA swabs [REDACTED]

<u>Task/Test</u>	<u>Value</u>
Date of Analysis	12/06/2022
Seal	evidence tape
Initialed	yes
Packaging	manila envelope
Package Labeling	22-M09903... DNA swab x2.. [REDACTED]
Contents Description/Notes	Two plastic capped, off-white swabs. ~1/4 of one swab cut to DNA. Repack, ets.
Retained	Yes
Item Source	E

### Item 49-Reference oral swabs [REDACTED]

SW

## BIOLOGY ANALYSIS NOTES

Case: M2022-4843

Examiner: Stephanie Wilt

Dates of analysis: 12/02/2022 to 12/07/2022

<u>Task/Test</u>	<u>Value</u>
Date of Analysis	12/06/2022
Seal	evidence tape
Initialed	yes
Packaging	manila envelope
Package Labeling	22-M09903...Buccal swab.. [REDACTED]
Contents Description/Notes	Two plastic capped, off-white swabs. ~1/4 of one swab cut to DNA. Repack, ets.
Retained	Yes
Item Source	E

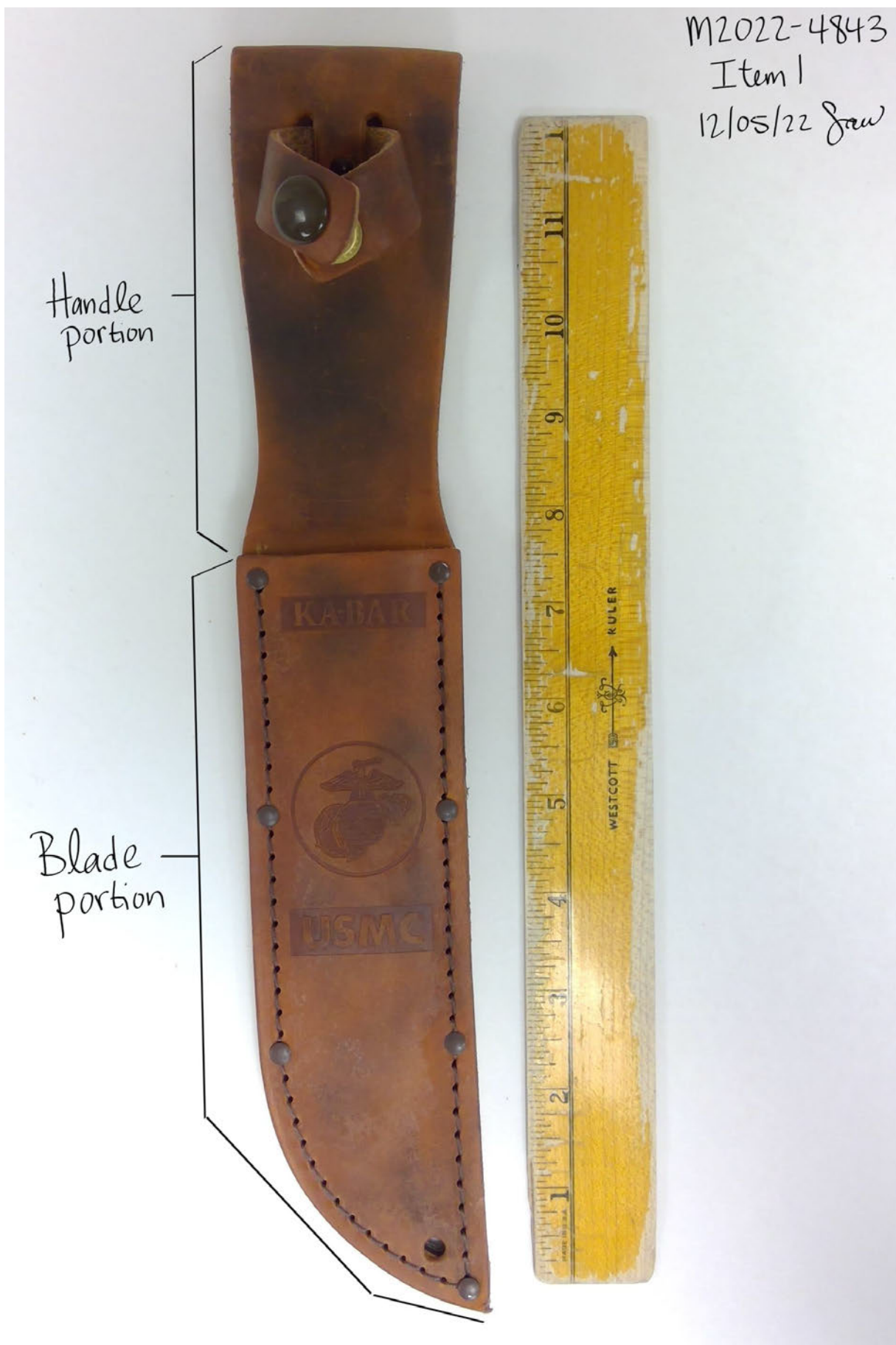
### Item 50-Reference oral swabs [REDACTED]

<u>Task/Test</u>	<u>Value</u>
Date of Analysis	12/06/2022
Seal	evidence tape
Initialed	yes
Packaging	white envelope
Package Labeling	22-M09903...Buccal.. [REDACTED]
Contents Description/Notes	Swab box cont'g two off-white swabs. ~1/4 of one swab cut to DNA. Repack, ets.
Retained	Yes
Item Source	E

## Screening Analysis Controls

<u>Task/Test</u>	<u>Value</u>
Date	12/02/2022
O-Tol Lot#	O-TOL051822
O-Tol(+)	blue/green
O-Tol(-)	no reaction

SAW



SAW





SAW

Top Side

M2022-4843  
Item 40  
12/02/22 Saw

