

SW

BIOLOGY ANALYSIS NOTES

Case: M2022-4843

Examiner: Stephanie Wilt

Dates of analysis: 11/17/2022 to 11/18/2022

General Analysis

Item 1-KA-BAR knife sheath

<u>Task/Test</u>	<u>Value</u>
------------------	--------------

Date of Analysis	11/17/2022
------------------	------------

Seal	evidence tape
------	---------------

Initialed	yes
-----------	-----

Packaging	brown paper bag
-----------	-----------------

Package Labeling	22-M09903...Knife sheath
------------------	--------------------------

Contents Description/Notes	Note: Item opened by and examined while in the custody of Forensic Scientist Tina Walthall. Tan leather KA-BAR knife sheath. USMC with logo and snap button strap on front (note: designated as side A in photos), belt loop, and sleeve has rivets. Used bright light to examine: obs white residue on and near threads, dark areas of discoloration in material, and very small red-brown stains on back (note: designated as side B in photos). Tested 4 total stains on back (all = o-tol pos). Collected trace material on to adhesive of sticky notes: 3 on back and 3 on front strap; pack in small man env and left in custody of FS T. Walthall. Used 1 swab to swab front strap (=Item 1.1, v light gray transfer to swab, consumptive). Used 1 swab to swab edges on handle portion (=Item 1.2, v light brown transfer to swab, consumptive; note: avoided red-brown stains). Used 1 swab to swab edges on blade portion (=Item 1.3, v light brown transfer to swab, consumptive). Used 2 swabs to swab o-tol pos staining on back (=Item 1.4, light red-brown transfer concentrated on tips, consumptive; note: all stains collected). Note: Item left in the custody of FS T. Walthall pending latent print analysis.
----------------------------	--

O-Tol	Positive
-------	----------

Item 1.1-Swab of front strap

<u>Task/Test</u>	<u>Value</u>
------------------	--------------

Date of Analysis	11/17/2022
------------------	------------

Contents Description/Notes	Whole swab cut to DNA, remaining swab stick pack in man env, ets.
----------------------------	---

Retained	Yes
----------	-----

Item Source	Q
-------------	---

Item 1.2-Swab of edges on handle portion

<u>Task/Test</u>	<u>Value</u>
------------------	--------------

Date of Analysis	11/17/2022
------------------	------------

Contents Description/Notes	Whole swab cut to DNA, remaining swab stick pack in man env, ets.
----------------------------	---

Retained	Yes
----------	-----

Item Source	Q
-------------	---

Item 1.3-Swab of edges on blade portion

SW

BIOLOGY ANALYSIS NOTES

Case: M2022-4843

Examiner: Stephanie Wilt

Dates of analysis: 11/17/2022 to 11/18/2022

<u>Task/Test</u>	<u>Value</u>
Date of Analysis	11/17/2022
Contents Description/Notes	Whole swab cut to DNA, remaining swab stick pack in man env, ets.
Retained	Yes
Item Source	Q

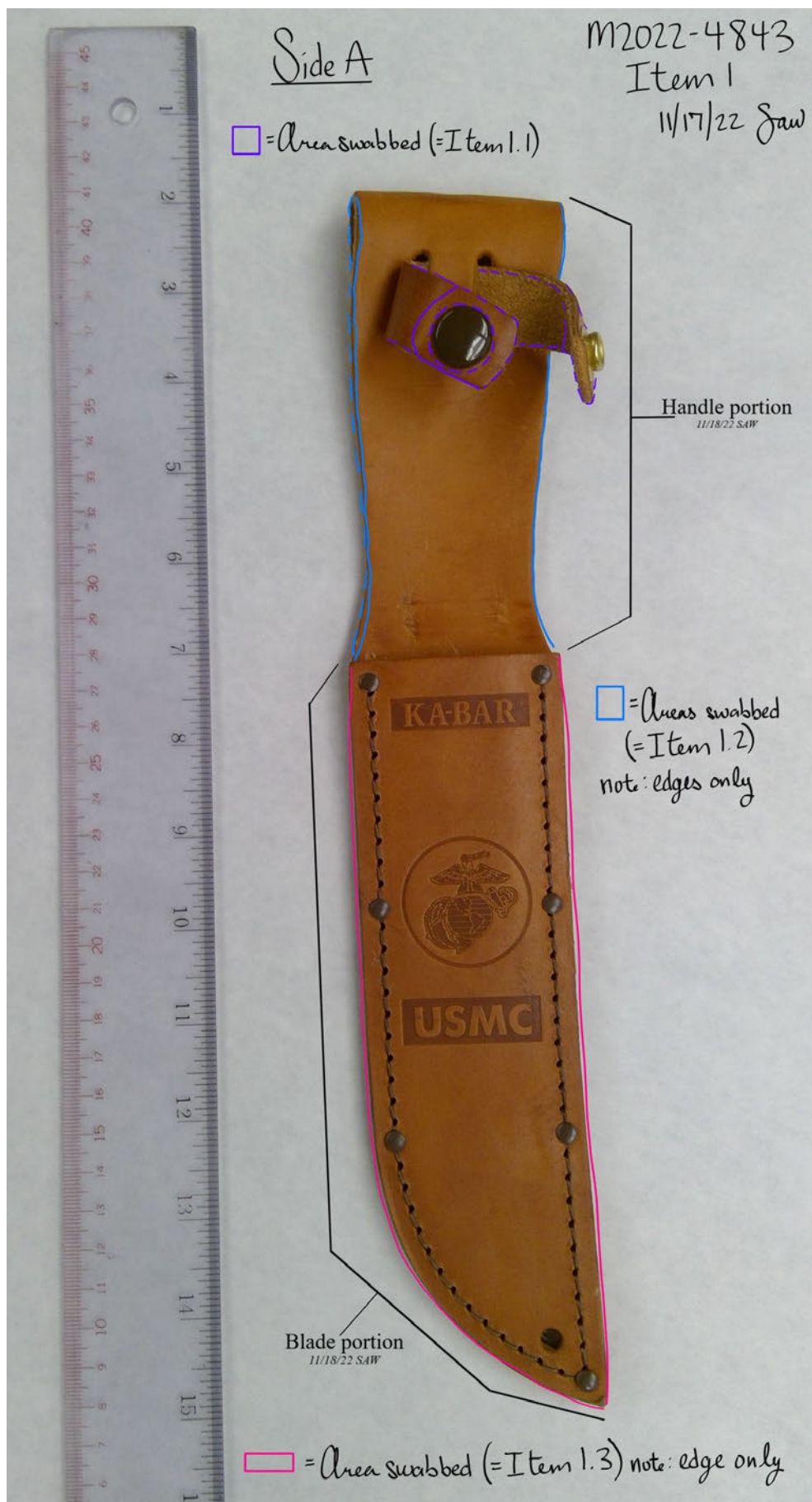
Item 1.4-Swabs of stains on back

<u>Task/Test</u>	<u>Value</u>
Date of Analysis	11/17/2022
Contents Description/Notes	Stained portion of both swabs cut to DNA (note: totaling ~1 swab; no staining left on swabs). Remaining swabs pack in man env, ets.
Retained	Yes
Item Source	Q

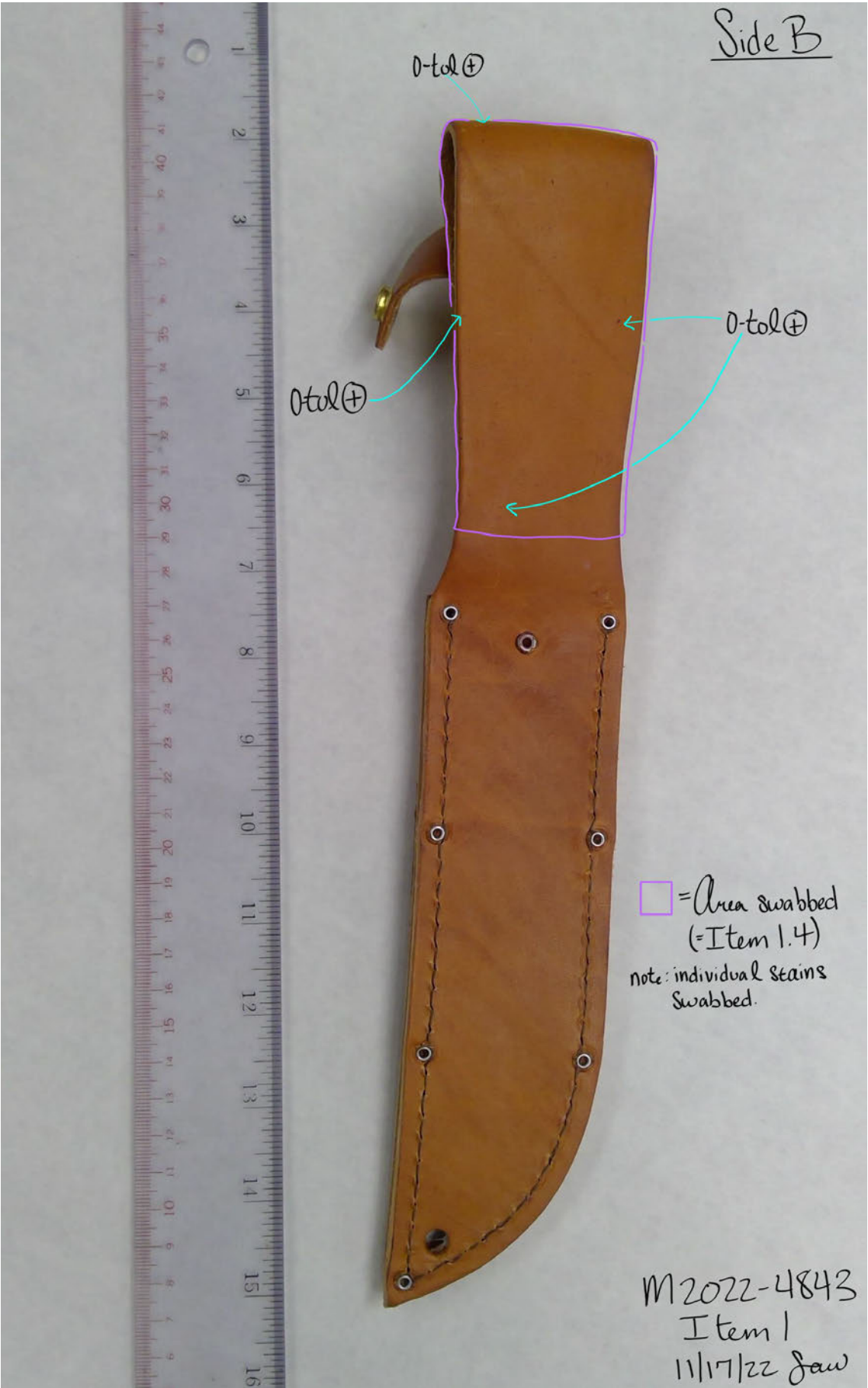
Screening Analysis Controls

<u>Task/Test</u>	<u>Value</u>
Date	11/17/2022
O-Tol Lot#	O-TOL051822
O-Tol(+)	blue/green
O-Tol(-)	no reaction

SAW



SAW



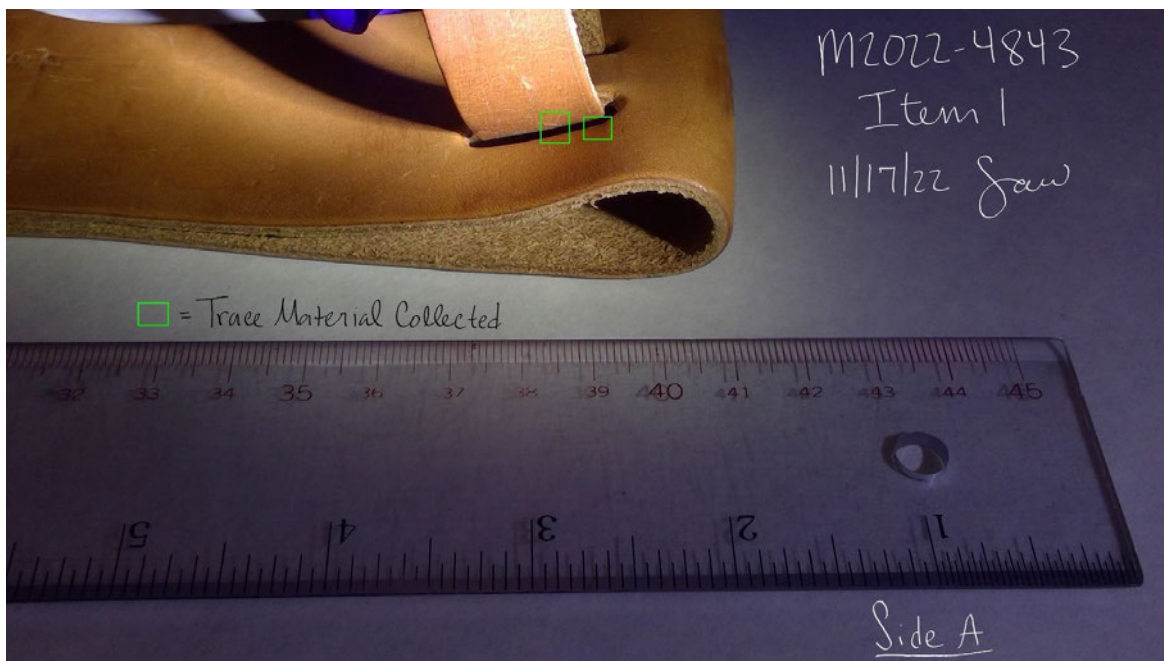
SAW

M2022-4843
Item 1
11/17/22 Jan

Side B



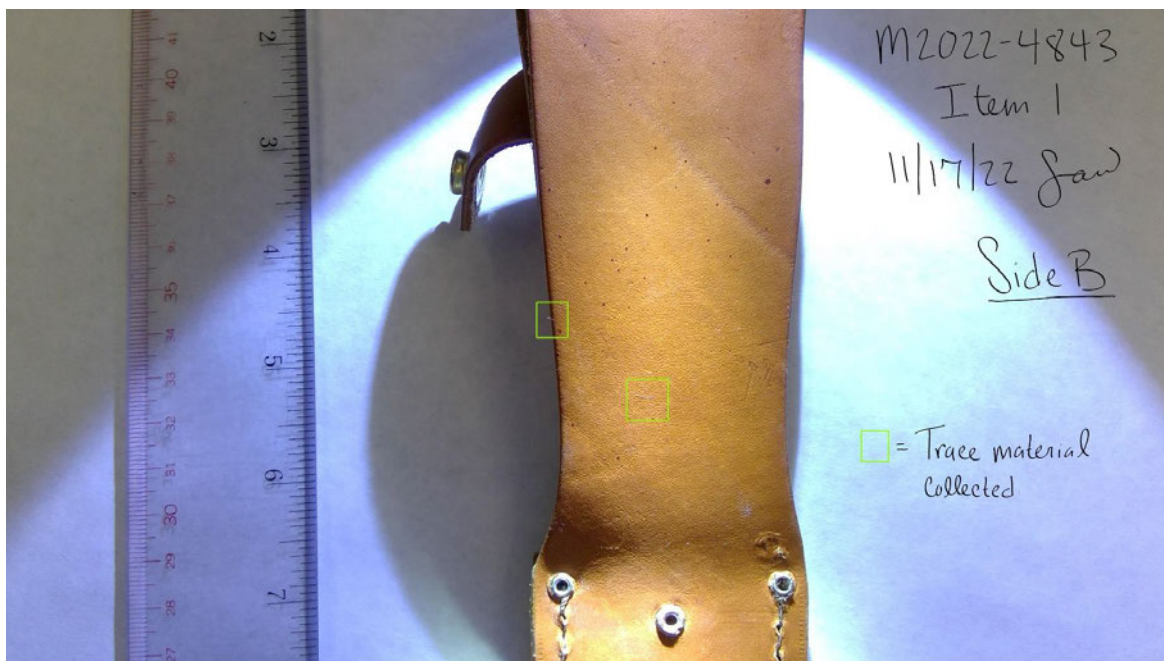
SW



SW



SW



SW

